

ZW75-6 / ZX65USB-5

HITACHI

Reliable solutions

Perfect compact partners



Efficiency | Versatility | Comfort



“ Hitachi develops compact line products that are proven to meet the requirements on the job site ”

Seigo Yamamoto,
HCME Compact Product Manager





DEMAND **EFFICIENCY**

The efficiency of your equipment has a direct impact on the profitability of your business. Designed and built using market-leading technology, Hitachi excavators and compact wheel loaders perform reliably with low levels of fuel consumption and are easy to maintain. They offer exceptional levels of productivity and a low cost of ownership.

Compact design

The clever design of Hitachi mini excavators and compact wheel loaders enables them to access more areas on site than larger models, particularly where space is limited. The ZX65USB-5 has a short-tail swing radius, which is particularly beneficial for urban areas, road construction and utilities projects.

Easy to manoeuvre

Hitachi equipment is easy to manoeuvre around busy job sites. This results in high levels of productivity for excavation and transport of materials. The ZW75-6 is suitable for a wide range of solutions, including general construction, recycling and agriculture. A high lift option increases the loading height when required.

Reduced maintenance

Several features on Hitachi excavators and compact wheel loaders are designed to reduce maintenance requirements, which means minimal downtime and reduced costs. Covers on the ZW75-6 and ZX65USB-5 open widely and easily to provide quick and convenient access.



DEMAND **VERSATILITY**

Hitachi excavators and compact wheel loaders are ideal for working on a variety of job sites. Whether your business is in agriculture, municipal works, road construction, demolition or forestry, Hitachi machines will provide a smooth and efficient operation.

Easy to transport

Hitachi equipment is easy to move between locations on trailers with compact dimensions for convenient transport. For example, the ZW75-6 compact wheel loader is 2.47m high and can be transported on a variety of trailers. It also has an optional travel speed of 30km/h.

Flexible and efficient

Both Hitachi excavators and compact wheel loaders can be fitted with a variety of attachments quickly and easily, which enhances their versatility for different applications. The ZW75-6 has an electro-hydraulically operated quick coupler, which also enhances safety and efficiency.

Exceptional precision

Hitachi machines work with a high degree of control and precision, thanks to features such as the high performance single arm and a self-stabilising pendulum joint (ZW75-6) and the auto-shift travelling system that reduces the speed of the ZX65USB-5 according to the travel load.



“ Our compact wheel loaders
are versatile for a wide range of
activities on the job site ”

Bill Drougkas,
HCME Wheel Loader Product Manager





“ Our reliable compact construction equipment makes us the perfect partner for your business ”

Martin Visser,
HCME Compact Product Specialist

ZX65USB-5



ZW75-6





DEMAND COMFORT

Compact on the outside but spacious on the inside, Hitachi machines are designed with the operator in mind. They offer a comfortable working environment, with exceptional visibility of the job site and several user-friendly features.

Comfortable workspace

With wide seats, generous leg room and storage space, the air-conditioned cab of a Hitachi machine is big on comfort to ensure operators feel less tired at the end of a working day. It is also safe and easy to access via an entrance step.

Easy operation

The Hitachi cab is equipped with ergonomic and user-friendly controls for easy operation. The multifunctional LCD monitor shows the operator all they need to know at a glance, including the machine's status and settings.

Excellent visibility

Visibility is essential for safety and precision, particularly when working on busy construction sites and in confined areas. The ZX65USB-5 has an enlarged front window and door, and the ZW75-6 offers excellent all-round visibility from the cab, and an improved view of the fork attachment.

ZX65USB-5

OPTIONS



The auxiliary function lever has a proportional switch for easy control of the front attachment.

Advantages:

- Easy operation
- Excellent control
- Operator comfort



Individual rubber pad shoes can be replaced easily when required.

Advantages:

- Easy maintenance
- Reduced costs



Assist piping enables easy operation of hydraulically actuated attachments.

Advantages:

- Increased flexibility
- Greater versatility

The ZX65USB-5 can be fitted with an electric fuel pump.

Advantages:

- Easy refuelling
- Excellent efficiency



A 270kg additional counterweight is available for the ZX65USB-5.

Advantages:

- Enhanced flexibility
- Greater stability



The ZX65USB-5 can be equipped with an effective immobilizer.

Advantages:

- Prevents theft and vandalism
- Peace of mind

ZW75-6

OPTIONS



The third hydraulic function enables easy operation of hydraulically actuated attachments.

Advantages:

- Greater versatility
- Exceptional performance



The safety valve prevents the lowering of the lift arm if there is a leakage in the hydraulic hoses.

Advantages:

- Enhanced safety
- Greater reliability

Front and rear LED work lights.

Advantages:

- Long life span
- Enhanced visibility
- Higher safety
- Durable



The HDrive enables manual adjustment of the engine's rpm setting.

Advantages:

- Improved precision and accuracy
- Enhanced versatility
- Easy operation



An optional 30km/h travel speed adheres to local legal requirements.

Advantages:

- Easy transport
- Enhanced versatility

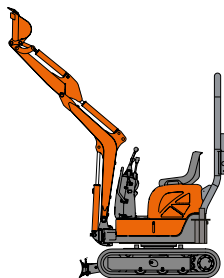


A ride control feature prevents pitching during travel over rough terrain.

Advantages:

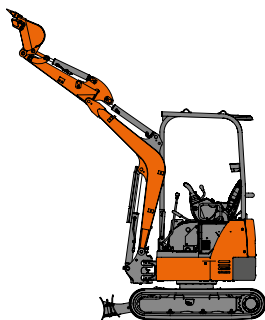
- Smooth operation
- Operator comfort

Mini excavators



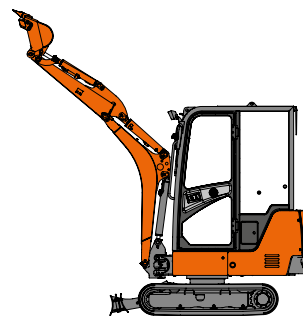
ZX10U-2

Engine rated power (kW) ISO 9249..... 9.5
 Operating weight (kg)..... 1,110
 Bucket capacity (m³) ISO heaped 0.018 – 0.024



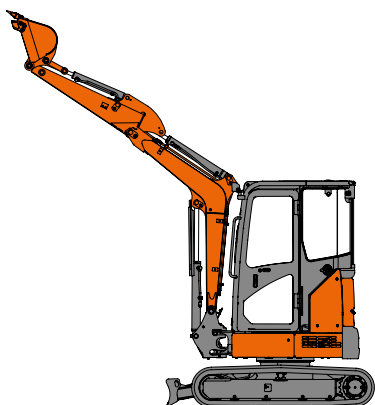
ZX17U-5/ZX19U-5

Engine rated power (kW) ISO 9249..... 10.6
 Operating weight (kg)..... 1,760/1,880
 Bucket capacity (m³) ISO heaped 0.020 – 0.050



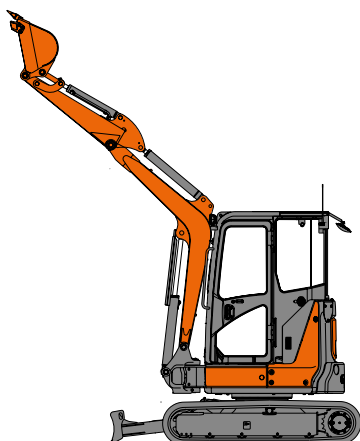
ZX19-5

Engine rated power (kW) ISO 9249..... 10.6
 Operating weight (kg)..... 1,920
 Bucket capacity (m³) ISO heaped 0.020 – 0.050



ZX26U-5

Engine rated power (kW) ISO 9249..... 14.5
 Operating weight (kg)..... 2,720
 Bucket capacity (m³) ISO heaped 0.070 – 0.080



ZX33U/ZX38U-5

Engine rated power (kW) ISO 9249..... 21.2
 Operating weight (kg)..... 3,510/3,960*
 Bucket capacity (m³) ISO heaped 0.08 – 0.15



ZX48U/ZX55U-5

Engine rated power (kW) ISO 9249..... 28.2
 Operating weight (kg)..... 4,890/5,200*
 Bucket capacity (m³) ISO heaped 0.11 – 0.17

* Cab with long arm and rubber shoes

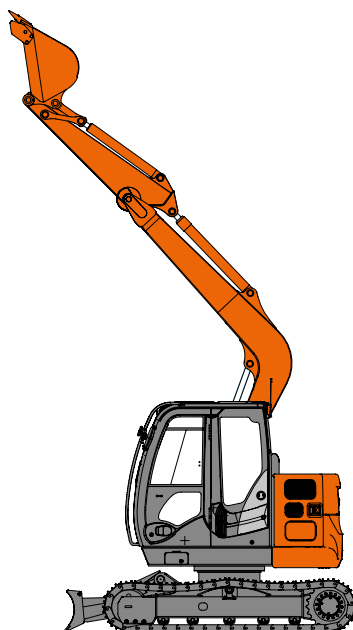
* Cab with long arm and rubber shoes



ZX65USB-5

Engine rated power (kW) ISO 9249..... 34.1
Operating weight (kg)..... 6,160*
Bucket capacity (m³) ISO heaped 0.22 – 0.24

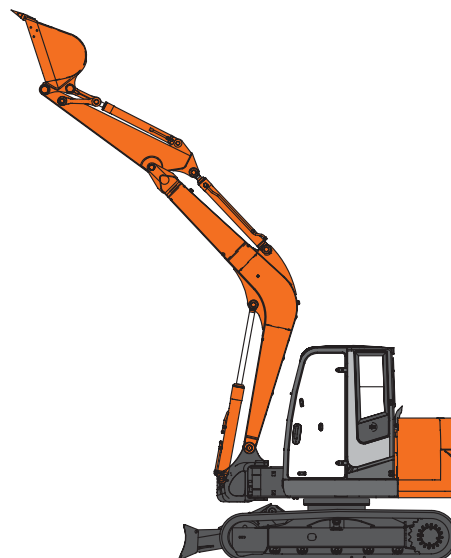
* With long arm and rubber shoes



ZX85US-5

Engine rated power (kW) ISO 9249..... 34.1
Operating weight (kg)..... 8,170*
Bucket capacity (m³) ISO heaped 0.13 – 0.33

* With Monoblock boom, long arm
and 450mm grouser shoes

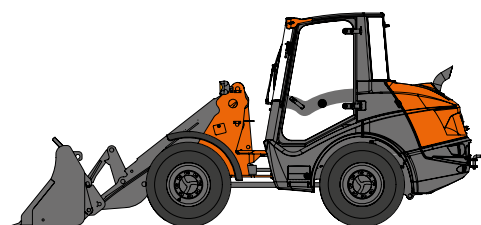


ZX85USB-5

Engine rated power (kW) ISO 9249..... 34.1
Operating weight (kg)..... 8,470*
Bucket capacity (m³) ISO heaped 0.13 – 0.33

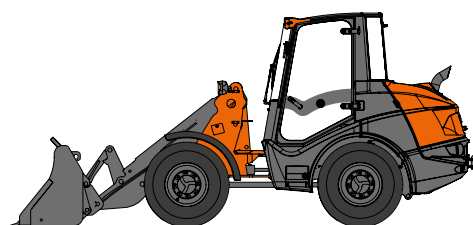
* With Monoblock boom, long arm
and 450mm grouser shoes

Compact wheel loaders



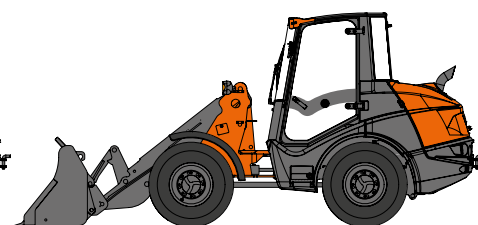
ZW65-6

Engine rated power (kW) ISO 14396 ...50
Operating weight (kg)..... 4,710
Bucket capacity (m³) ISO heaped 0.70 – 1.20



ZW75-6

Engine rated power (kW) ISO 14396 ...50
Operating weight (kg)..... 5,050
Bucket capacity (m³) ISO heaped 0.80 – 1.50



ZW95-6

Engine rated power (kW) ISO 14396 ...55.4
Operating weight (kg)..... 5,410
Bucket capacity (m³) ISO heaped 1.00 – 1.60

Prior to operating this machine, in a country other than a country of its intended use, it may be necessary to make modifications to it so that it complies with the local regulatory standards (including safety standards) and legal requirements of that particular country. Please do not export or operate this machine outside the country of its intended use until such compliance has been confirmed. Please contact your Hitachi dealer in case of questions about compliance.

These specifications are subject to change without notice.
Illustrations and photos show the standard models, and may or may not include optional equipment, accessories, and all standard equipment with some differences in color and features. Before use, read and understand the Operator's Manual for proper operation.

