

**GEHL**

# ARTICULATED LOADERS

AL550 | AL650 | AL750 | ALT750 | ALT950



**GEHL**  
WORKS LIKE YOU™



**BORN ON AN  
AMERICAN FARM  
IN 1859.**







---

# GEHL<sup>®</sup>

## WORKS LIKE YOU<sup>™</sup>

**S**tarting in 1859 GEHL has been rooted in agriculture. Designing and building machines to help America's hardest workers. Many years later, we are offering products world-wide that work just as hard as the farmers and construction workers who own and operate them.

We build machines that make life easier and exceed expectations. Here at GEHL, we know that true satisfaction isn't felt while earth-moving but looking back at a job well-done. That is the true payoff for our operators and built in our DNA at GEHL.

For over 160 years we have been partnering with farmers, construction workers, landscapers and rental companies – large and small – to help move mountains and build a strong foundation of trust. **We care about our operators.** Safety and efficiency go into every machine we produce to help hardworking people get home safe and hopefully even a little bit early. ■

**The true payoff comes in a job well-done.**

---





**RAISED ON  
A GLOBAL  
JOB SITE.**



**W**e have always designed and built machines to help the needs of the people who change our landscape. Over time, regulations and the needs of these workers change. GEHL continues to innovate and change with them to supply the most robust durable machines on the market.

Humble and hard working people, responsible for molding and changing the world around us are not overlooked by our brand. With that in mind, GEHL has contributed heavily to the construction industry and is dedicated to continue for many years to come.

GEHL has invested significantly into the future of our products and will continue to change and meet the requirements of urban job sites. Driven by the voice of our customers and industry data we are committed to be here to design, build, service and stand behind our products. We will help you do the heavy lifting.

As the global landscape changes we stay on track supplying machines that are reliable and meet or exceed emissions standards for the future of our planet and our young operators of tomorrow. ■

# ARTICULATED LOADERS



## AL550

Maximum Height of Bucket Pivot Point  
- 3161mm | 10' 4"  
Static Tipping Load Full Turn with Bucket  
- 1693kg | 3,732lbs  
Loader Arm Style - Z-Bar

### CUSTOMER BENEFITS

Smallest Z-Bar Loader  
H - 2.3m / W - 1.5m / L - 4.2m  
Great for Smaller Spaces  
Hydrostatic Transmission



## AL650

Maximum Height of Bucket Pivot Point  
- 3.3m | 10' 11"  
Static Tipping Load Full Turn with Bucket  
- 2379kg | 5,245lbs  
Loader Arm Style - Z-Bar

### CUSTOMER BENEFITS

Z-Bar Loader Arm  
H - 2.5m / W - 1.7m / L - 4.3m  
Compact with Great Reach  
Hydrostatic Transmission



## AL750

Maximum Height of Bucket Pivot Point  
- 3.5m | 11' 5"  
Static Tipping Load Full Turn with Bucket  
- 2779kg | 6,127lbs  
Loader Arm Style - Z-Bar

### CUSTOMER BENEFITS

Largest Z-Bar Loader  
H - 2.5m / W - 1.8m / L - 4.5m  
Heavy-Duty Axels  
Hydrostatic Transmission





## ALT750

Maximum Lifting Height Below Forks  
- 4.85m | 15' 11"

Static Tipping Load with Bucket Full Turn  
- 1820kg | 4,012lbs

Loader Arm Style - Telescopic

### CUSTOMER BENEFITS

Compact Telescopic Loader  
Maximum Lifting Height of 4.9m  
H - 2.5m / W - 2m / L - 5.7m  
Hydrostatic Transmission



## ALT950

Maximum Lifting Height Below Forks  
- 5.21m | 17' 1"

Static Tipping Load with Forks Full Turn  
- 4147kg | 9,143lbs

Loader Arm Style - Telescopic

### CUSTOMER BENEFITS

Largest Loader Offered  
Maximum Lifting Height of 5.2m  
H - 2.7m / W - 2.3m / L - 5.7m  
CVT Transmission



# REACHING NEW HEIGHTS

## Articulation Locking Bar

Transport and lift with additional safety and stability.

## Tight Turning Radius

Articulated steering speeds up cycle times and increase maneuverability in tight areas.

## High-Impact Bucket Breakout

These machines offer some of the highest breakout forces in their respective classes, allowing you to fill the bucket to the max with each scoop, making you more productive.

## Power-A-Tach®

The Power-A-Tach® hydraulic attachment system is standard equipment and features a skid steer interface to utilize some of the attachments you already own. Quickly transform your machine with the flexibility of Skid Steer, Euro Style and 4-Point Systems.

## Front + Rear Locking Differentials

Conveniently located on the joystick, one button will activate four wheel drive for maximum tractive effort.







### Proportional Auxiliary Hydraulics

Standard equipment, activated with a rocker switch on the joystick. Detent and pressure relief are included to optimize attachment hook-up and performance.

### Get Dirty in Comfort

A seven-way adjustable seat, multi-function joystick, fully-adjustable steering column and cup holder are standard cab features.

### Tool-Free Access

A lockable, self-opening hood allows access to the engine, hydraulic pumps, battery, fuse panels, fan motor and more.

### Reversing Fan

Eject debris from the hydraulic and engine cooler, simply by pushing a button in the cab.

*\*Not standard on AL750D*

### Easy Entry

A low, non-slip step is essential for tasks requiring the operator to frequently enter and exit the machine.

### Inching Pedal

With maximum precision speed control, maintain the full force needed to lift the load.



# WHY AN ARTICULATED LOADER?

## MANEUVERABILITY

Get the most out of your machine in any space. Articulation allows you to travel in between objects and in small areas, and reach loads in tight spaces. Increase your performance with the ability to lift loads at an angle and dump at new heights.

## ALL-TERRAIN

Navigate the toughest terrain with features such as a standard differential lock that allows you to get as much torque and traction you need. Use our inching pedal for precise placement of the machine and choose from a large variety of tires based on your needs and space on page 11.



# Z-BAR OR TELESCOPIC?

**O**ptions available throughout our large Articulated Loader range can make the difference for efficiency and convenience on the job. Our Z-Bar loader arm is featured on the AL550, AL650 and AL750. Benefits of the Z-Bar loader arm include greater breakout force, as well as added visibility of the bucket and work in

front of you. If you're after extra reach, Telescopic loader arms are what you're looking for. Our ALT750 provides a maximum lifting height of 4.8 meters, while the ALT950 has our highest reach of 5.2 meters. Reach loads into feeder wagons, box trucks and more with the added reach.

## CAB STRUCTURE OPTIONS AVAILABLE

\*ALT950 only available in cab



# THE GEHL STANDARD

ALL LARGE ARTICULATED LOADERS IN THE GEHL

LINEUP\* COME STANDARD WITH A

**HYDROSTATIC TRANSMISSION  
WITH DIFFERENTIAL LOCK.**

3-SPEED TRANSMISSIONS ARE OPTIONAL.

\*with the exception of ALT950's CVT Transmission

## ATTACHMENTS - ONE MACHINE TO OPERATE AS MANY MACHINES



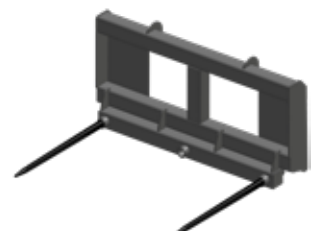
DOZER BLADE



LIGHT MATERIAL BUCKET



BROOM BUCKET



BALE SPIKE





**AGRICULTURAL  
PROFILE**

\*reference image, not exact

**1**



**SKID STEER  
PROFILE**

**2**



**AGRICULTURAL /  
INDUSTRIAL PROFILE**

**3**



# TIRES + OVERALL WIDTH

Choose the tires that fit your working environment.

- 1 **15.5/55-17 R-1**  
AL550 Overall Width - 1492mm
- 2 **425/55R17 R-1**  
AL550 Overall Width - 1530mm
- 3 **33x15.5-16.5**  
AL550 Overall Width - 1435mm
- 4 **12-16.5**  
AL550 Overall Width - 1292mm
- 5 **405/70-20\***  
AL650 Overall Width - 1845mm / 2017mm  
AL750 Overall Width - 1736mm / 1957mm  
ALT750 Overall Width - 1736mm / 1957mm
- 6 **500/45-20\***  
AL650 Overall Width - 1788mm / 2012mm  
AL750 Overall Width - 1834mm / 1983mm  
ALT750 Overall Width - 1834mm / 1983mm
- 7 **600/40-22.5**  
AL750 Overall Width - 2022mm  
ALT750 Overall Width - 2022mm
- 8 **460/70/R24**  
ALT950 Overall Width - 2290mm
- 9 **500/70/R24**  
ALT950 Overall Width - 2350mm

\*indicates multiple sizes for reversible rim options



**INDUSTRIAL  
PROFILE**

3



**AGRICULTURAL  
PROFILE**

4



**AGRICULTURAL  
PROFILE**

5



**INDUSTRIAL  
PROFILE**

5













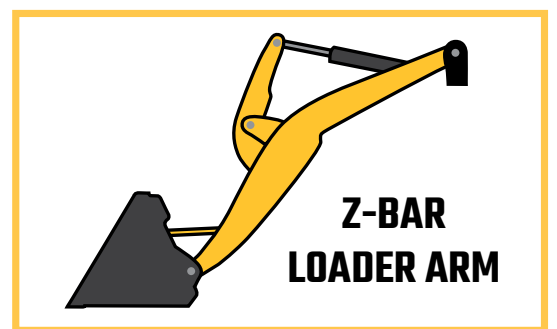
Capacities	Metric
Static tipping load with bucket (straight)	2190 kg
Static tipping load with bucket (full turn)	1693 kg
Static tipping load with forks (straight)	1547 kg
Static tipping load with forks (full turn)	1204 kg
Max. height of bucket pivot point	3.16 m
Reach at max. height	0.43 m
Breakout force with bucket	4329.46 daN
Static tipping load with bucket - Straight with cab	2190 kg
Static tipping load with bucket - Full turn with cab	1693 kg
Static tipping load with pallet forks - Straight with cab	1547 kg
Weight and dimensions	
Unladen weight (with forks) with 4-post canopy	3388.30 kg
Overall length to carriage (with hitch)	4.18 m
Wheelbase	1.74 m
Overall width of 4 posts canopy	1.23 m
Overall cab width	1.22 m
Overall height with 4 posts canopy	2.31 m
Overall height with cab	2.31 m
Tilt-up angle	39.90 °
Tilt-down angle	44.70 °
External turning radius (over tyres)	3.20 m
Articulation angle	45 °
Overall width less bucket	1.47 m
Ground clearance	0.25 m
Performances	
Crowd	2.52 s
Dump	1.85 s
Engine	
Engine brand	Deutz
Engine model	TD 2.2 L3
Number of cylinders / Capacity of cylinders	3 - 337.82 cm <sup>3</sup>
I.C. Engine power rating / Power (kW)	60 Hp / 45.50 kW
Max. torque / Engine rotation	200 Nm / 2400 rpm
Engine cooling system	2 radiators water + hydraulic oil
Transmission	
Transmission type	Hydrostatic
Number of gears (forward / reverse)	2 / 2
Max. travel speed (may vary according to applicable regulations)	28.32 km/h
Differential lock	Machine Lock Rear & front
Parking brake	Manual
Hydraulics	
Hydraulic pump type	Gear pump
Hydraulic flow - Pressure	58.30 l/min / 210 Bar
High-Flow Option (l/min)	72.30 l/min
Drive hydraulic system pressure	420 Bar
Tank capacities	
Hydraulic oil	45 l
Fuel tank	82.50 l
Miscellaneous	
Safety cab homologation	ROPS - FOPS cab (level 1)







Pound-for-pound packed with power, the AL550 and its Z-kinematic loader arm features unmatched break-out forces to take on the toughest challenges. Small yet powerful, this machine's responsive hand throttle and 2-speed hydrostatic transmission get you to the task at hand with speeds up to 18 MPH, and its front and rear differential locks ensure you have traction exactly when and where you need it. In other words, this machine is like you—ready to get the job done.



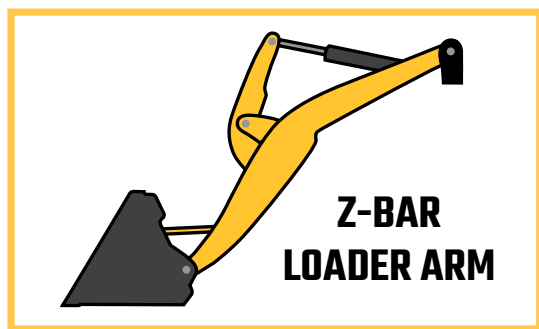
**3.16 m**

MAX HEIGHT  
[AT BUCKET PIVOT POINT]

**25 cm**  
GROUND CLEARANCE

**28 kph**  
MAXIMUM SPEED





Built to deliver a new level of productivity in the most demanding environments, the AL650 combines compact dimensions with raw power—giving you the ability to slip in and out of tight spaces without compromising on lift strength. With full 360° visibility, an adjustable workspace, and ergonomic controls centralized around an intuitive joystick, the AL650 ensures you'll get the job done in comfort all day long. When hard work comes calling, answer with a machine that's as capable, strong, and committed as you.

**3.12 m**  
MAX. LIFTING HEIGHT  
[BELOW FORKS]

**3.31 m**  
EXTERNAL TURNING RADIUS

**3059 kg**  
STATIC TIPPING LOAD  
[WITH BUCKET STRAIGHT]





Capacities	
Max. height of bucket pivot point	3.32 m
Max. lifting height (below forks)	3.13 m
Breakout force with bucket	5743 daN
Static tipping load with bucket - Straight with cab	3059 kg
Static tipping load with bucket - Full turn with 4-post canopy	2230 kg
Static tipping load with bucket - Full turn with cab	2379 kg
Static tipping load with pallet forks - Straight with cab	2405 kg
Static tipping load with pallet forks - Straight with 4-post canopy	2259 kg
Static tipping load with pallet forks - Full turn with 4-post canopy	1778 kg
Static tipping load with bucket - Straight with 4-post canopy	2907 kg
Weight and dimensions	
Unladen weight (with forks) with 4-post canopy	4150 kg
Unladen weight (with forks)	4309 kg
Ground clearance	0.37 m
Overall length to carriage (without hitch)	4.26 m
Wheelbase	2007 mm
Overall width of 4 posts canopy	1.37 m
Overall cab width	1.37 m
Overall width (over tyres)	1.65 m
Overall height with 4 posts canopy	2.47 m
Overall height with cab	2.47 m
Tilt-up angle	45 °
Tilt-down angle	45 °
External turning radius (over tyres)	3.31 m
Articulation angle	45 °
Engine	
Engine brand	Yanmar
Engine model	4TNV98CT
Number of cylinders / Capacity of cylinders	4 - 3300 cm <sup>3</sup>
I.C. Engine power rating / Power (kW)	64.40 Hp / 48 kW
Max. torque / Engine rotation	280 Nm / 2300 rpm
Engine cooling system	2 radiators water + hydraulic oil
Transmission	
Transmission type	Hydrostatic
Number of gears (forward / reverse)	2 / 2
Travel speed (laden)	30 km/h
Max. travel speed (may vary according to applicable regulations)	30 km/h
Differential lock	Machine Lock Rear & front
Parking brake	Manual
Hydraulics	
Hydraulic pump type	Gear pump
Hydraulic flow - Pressure	69.50 l/min / 200 bar
High-Flow Option (l/min)	97 l/min
Drive hydraulic system pressure	420 bar
Tank capacities	
Hydraulic oil	73.80 l
Fuel tank	95 l
Noise and vibration	
Vibration to whole hand/arm	< 2.50 m/s <sup>2</sup>
Miscellaneous	
Safety cab homologation	ROPS - FOPS cab (level 1)



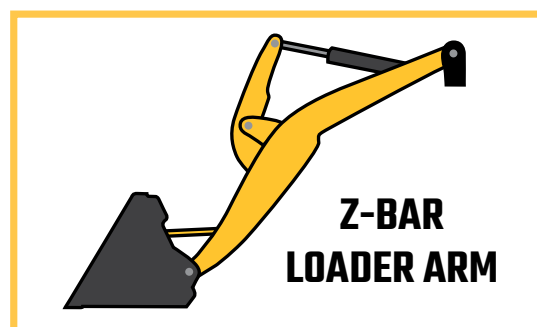
Capacities	Metric
Max. height of bucket pivot point	3.47 m
Max. lifting height (below forks)	3.28 m
Breakout force with bucket	5906 daN
Static tipping load with bucket - Straight with cab	3587 kg
Static tipping load with bucket - Full turn with 4-post canopy	2621 kg
Static tipping load with bucket - Full turn with cab	2779 kg
Static tipping load with pallet forks - Straight with cab	2882 kg
Static tipping load with pallet forks - Straight with 4-post canopy	2741 kg
Static tipping load with pallet forks - Full turn with 4-post canopy	2174 kg
Static tipping load with bucket - Straight with 4-post canopy	3378 kg
Weight and dimensions	
Unladen weight (with forks) with 4-post canopy	4781 kg
Unladen weight (with forks)	4953 kg
Ground clearance	0.31 m
Overall length to carriage (without hitch)	4.44 m
Wheelbase	2.06 m
Overall width of 4 posts canopy	1.45 m
Overall cab width	1.45 m
Overall width (over tyres)	1.74 m
Overall height with 4 posts canopy	2.48 m
Overall height with cab	2.48 m
Tilt-up angle	45 °
Tilt-down angle	45 °
External turning radius (over tyres)	3.41 m
Articulation angle	45 °
Engine	
Engine brand	Deutz
Engine model	TD3.6 L4
Number of cylinders / Capacity of cylinders	4 - 3600 cm <sup>3</sup>
I.C. Engine power rating / Power (kW)	74.30 Hp / 55 kW
Max. torque / Engine rotation	330 Nm / 2300 rpm
Engine cooling system	2 radiators water + hydraulic oil
Transmission	
Transmission type	Hydrostatic
Number of gears (forward / reverse)	2 / 2
Travel speed (laden)	30 km/h
Max. travel speed (may vary according to applicable regulations)	30 km/h
Differential lock	Machine Lock Rear & front
Parking brake	Manual
Hydraulics	
Hydraulic pump type	Gear pump
Hydraulic flow - Pressure	69.50 l/min / 200 bar
High-Flow Option (l/min)	114.30 l/min
Drive hydraulic system pressure	380 bar
Tank capacities	
Hydraulic oil	73.80 l
Fuel tank	102 l
Noise and vibration	
Vibration to whole hand/arm	< 2.50 m/s <sup>2</sup>
Miscellaneous	
Safety cab homologation	ROPS - FOPS cab (level 1)







For tough jobs, you need a tougher machine. The largest Articulated Loader with a standard lift arm we offer, the AL750 is for those who can't compromise—on agricultural and construction sites or anywhere else that demands more lifting power. Swiftly getting the job done with its high-performing hydrostatic transmission and Z-Bar lift arm for extra break-out force, this rugged and robust machine chews through the hardest workdays in less time. The AL750 has your back, enabling you to do your best work from the minute you arrive at work until the minute you head home.



**3.28 m**

MAX LIFTING HEIGHT  
[BELOW FORKS]

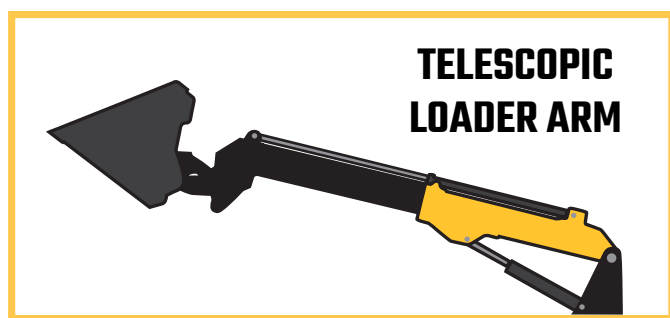
**4953 kg**

UNLADEN WEIGHT  
[WITH FORKS]

**30 km/hr**

MAXIMUM SPEED





**TELESCOPIC  
LOADER ARM**

**1820 kg**

**STATIC TIPPING LOAD**  
[FULL TURN WITH BUCKET]

**310 mm**

**GROUND CLEARANCE**

Need more reach on the construction site, farm, or lumber yard? The ALT750 is the answer. Pushing your lift abilities to new heights with a heavy-duty telescopic boom, the ALT750 is built with the agile chassis of the AL750—a reliable and strong foundation that's ready to take on tough tasks. A fully adjustable operator station providing true 360° visibility keeps you safe, comfortable, and ready for whatever challenges come your way. Built for any terrain or condition, the ALT750 is your opportunity to do more and extend your capabilities to a new level.





#### Capacities

Static tipping load with bucket (straight)
Static tipping load with bucket (full turn)
Max. payload with forks as per EN 474-3 (80%)
Max. height of bucket pivot point
Max. lifting height (below forks)
Max. outreach

Breakout force with bucket

Static tipping load with bucket (retracted)
Static tipping load with bucket (extended)
Bucket hinge pin height (retracted)
Bucket hinge pin height (extended)

#### Weight and dimensions

Unladen weight (with forks) with 4-post canopy
Ground clearance
Overall length to carriage (without hitch)
Overall cab width
Overall width (over tyres)
Overall height with 4 posts canopy
External turning radius (over tyres)
Articulation angle
Standard tyres

#### Engine

Engine brand
Engine model
Number of cylinders
I.C. Engine power rating / Power (kW)
Max. torque / Engine rotation
Engine cooling system

#### Transmission

Transmission type
Number of gears (forward / reverse)
Travel speed (laden)
Max. travel speed (may vary according to applicable regulations)
Differential lock
Parking brake

#### Hydraulics

Hydraulic pump type
Hydraulic flow - Pressure
High-Flow Option (l/min)
Drive hydraulic system pressure

#### Tank capacities

Hydraulic oil
Fuel tank

#### Noise and vibration

Vibration to whole hand/arm
-----------------------------

#### Miscellaneous

Safety cab homologation
-------------------------

#### Metric

3499 kg
1820 kg
1600 kg
5.03 m
4.84 m
3.30 m
4990 daN
3499 kg
1820 kg
3911 mm
5036 mm

5579 kg
0.31 m
5.73 m
1.28 m
1.96 m
2.48 m
4.03 m
40 °
405/70-20

Deutz
TD3.6 L4
4
74.30 Hp / 55 kW
330 Nm / 2300 rpm
2 radiators water + hydraulic oil

#### Hydrostatic

2 / 2
20 km/h
30 km/h
Machine Lock Rear & front
Manual

Gear pump
70 l/min / 380 bar
110 l/min
380 bar

73.70 l
115 l

#### < 2.50 m/s²

ROPS - FOPS cab (level 1)
---------------------------



Capacities	Metric
Static tipping load with forks (straight)	4978 kg
Static tipping load with forks (full turn)	4147 kg
Max. payload with forks as per EN 474-3 (80%)	3300 kg
Max. lifting height (below forks)	5.20 m
Max. outreach	3.30 m
Reach at max. height	1.20 m
Breakout force with bucket	6730 daN
Static tipping load with pallet forks - Straight with cab	4978 kg
Weight and dimensions	
Unladen weight (with forks)	8490 kg
Ground clearance	0.39 m
Overall length to carriage (with hitch)	5.72 m
Overall length to carriage (without hitch)	5.72 m
Wheelbase	2.50 m
Overall width (over tyres)	2.29 m
Overall height with cab	2.70 m
Tilt-up angle	9 °
Tilt-down angle	156 °
External turning radius (over tyres)	4.20 m
Articulation angle	44 °
Standard tyres	Alliance - A580 - 460/70 R24 159A8
Performances	
Crowd	3.50 s
Dump	2.70 s
Engine	
Engine brand	Deutz
Engine model	TCD 4.1 L4
Number of cylinders / Capacity of cylinders	4 - 4038 cm <sup>3</sup>
I.C. Engine power rating / Power (kW)	143 Hp / 105 kW
Max. torque / Engine rotation	550 Nm / 2300 rpm
Engine cooling system	3 radiators water + intercooler + hydraulic oil
Transmission	
Transmission type	M-Varioshift
Travel speed (laden)	40 km/h
Max. travel speed (may vary according to applicable regulations)	40 km/h
Differential lock	Limited slip differential on front & rear axles
Parking brake	Manual
Hydraulics	
Hydraulic pump type	Load sensing pump
Hydraulic flow - Pressure	158 l/min / 270 bar
Tank capacities	
Hydraulic oil	150 l
Fuel tank	150 l
Diesel Exhaust fluid (AdBlue® type)	10 l
Noise and vibration	
Noise at driving position (LpA) tested following NF EN 12053 norm	72 dB(A)
Noise to environment (LwA)	107 dB(A)
Vibration to whole hand/arm	< 2.52 m/s <sup>2</sup>
Miscellaneous	
Safety cab homologation	ROPS - FOPS cab (level 2)

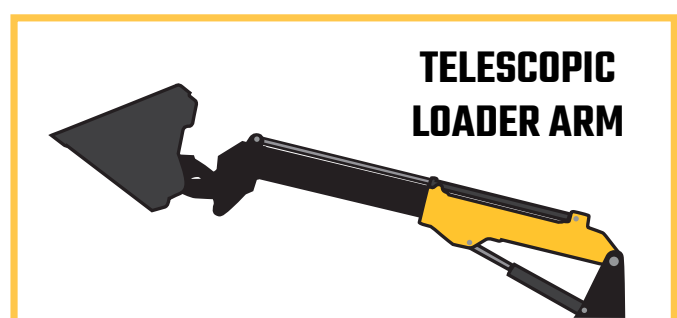
2.7 m







For jobs on construction or agricultural sites that demand the highest lift and maneuverability offered by an Articulated Loader, the ALT950 gets it done like no other. But don't let the size of this heavy-duty machine intimidate you. Intuitive controls make its telescopic boom easy to use, and a raised seating position delivers both improved safety during operation and unmatched visibility during dirty jobs. Working as hard as you do, the ALT950 represents your chance to reach new heights, get more done, and safely get you home at the end of the day—and maybe even a little early.



**5.72 m**

OVERALL LENGTH  
TO CARRIAGE

**1.2 m**

REACH AT  
MAX HEIGHT

# MAXIMIZE YOUR MACHINE



Scan with your phone  
to learn more and see  
a video overview.

## EQUIPMENT TRACKING

Know where your machines are at all times, check fuel levels, run time, down time, stay on top of any problems and minimize down-time with the My GEHL app and your connected machines. Automatic notifications are included designed to give you the important information you need immediately to increase your productivity and ensure your GEHL machine WORKS LIKE YOU..

## PREDICTIVE ANALYTICS

When running multiple tasks or job sites routine machine upkeep can be forgotten about. Not anymore! Set notifications to alert you of upcoming needed maintenance and repairs. Stay on top of problems before the problem becomes real and hits your profit margin.

## SCHEDULE REPAIRS & ORDER PARTS

Review suggested maintenance and schedule repairs right from your phone. This allows your dealer or service mechanic to get your parts on order and be better prepared to get your equipment back out into the field. Think of the app as your new co-worker and reap the benefits today of the NEW My GEHL app.

## ALL FROM THE PALM OF YOUR HAND



THE NEW MY GEHL APP IS AVAILABLE FOR  
DOWNLOAD FROM THE APP STORE OR ON  
GOOGLE PLAY STORE.

TAKE THE POWER OF YOUR MACHINE INTO  
YOUR HANDS TODAY!



my  
GEHL





# FULL SUPPORT

# ALL NEW GEHL.COM

Manitou Group is here to help support and service the machines you love after purchase. From Financing, Warranties, Maintenance and more, we are dedicated to support the end customer. Whether you're in agriculture or construction, Manitou Group provides machines, attachments and services adapted to your daily needs. Our goal is to make your life easier! See what you can accomplish with your new GEHL and keep your peace of mind with Manitou Group services and solutions.

**MANITOU GROUP** | ATTACHMENTS

**MANITOU GROUP** | PARTS

**MANITOU GROUP** | FINANCE



CHEK OUT THE NEW **GEHL.COM**

- SHOP MACHINES
- COMPARE MODELS
- FIND A DEALER
- LOCATE SUPPORT
- WORKING PHOTOS/VIDEOS

Also linked to our social media pages allowing you to join the conversation with other GEHL machine enthusiasts.



FROM YOUR COMPUTER  
OR YOUR PHONE!

# GEHL<sup>®</sup>

## WORKS LIKE YOU<sup>™</sup>

[GEHL.COM](https://www.gehl.com)



**Manitou Equipment America, LLC**

P.O. Box 179

One GEHL Way

West Bend, WI, USA 53095

P: (262) 334-9461

F: (262) 338-7517

GEHL reminds users to read and understand the operator's manual before operating any equipment. Also, make sure all safety devices and shields are in place and functioning properly. GEHL reserves the right to add improvements or make changes in specifications at any time without notice or obligation.